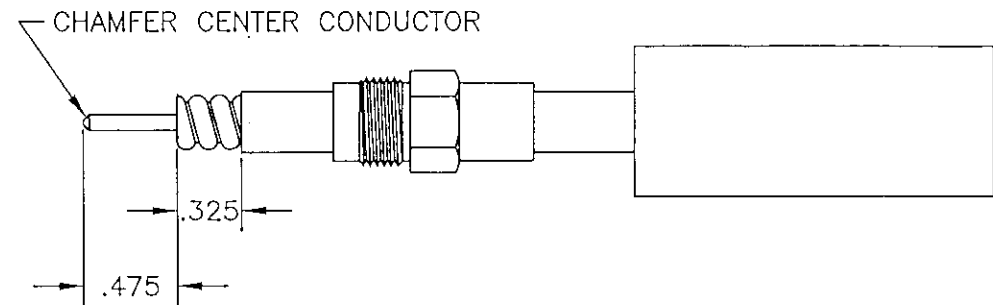
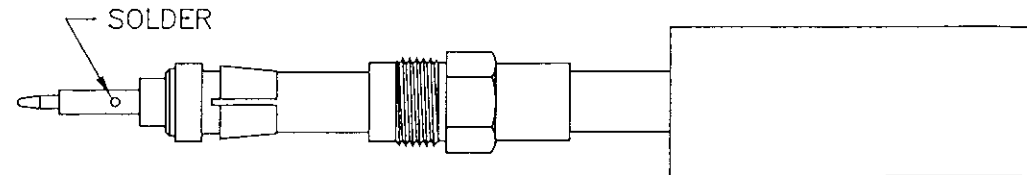


1. Place heat shrink and cable nut over outer jacket of cable. Trim outer jacket to expose copper corrugate DO NOT NICK CORRUGATE! Cut corrugate and dielectric off square to dimensions shown. Chamfer center conductor with a small file. Tin and wick center conductor making sure the solder is smooth and even.



2. Screw contact assembly onto copper corrugate until small end is up against outer jacket and center conductor is visible through inspection hole of contact, solder as shown. Slide cable nut forward up over contact assembly, and insert finished cable assembly into connector body and tighten by rotating connector body, DO NOT ROTATE CABLE NUT. Torque to 50 - 60in - lbs. Place heat shrink over cable nut, slide onto connector body and apply heat.



CABLE ASSEMBLY FOR
7-10-78

700240